

The Impact of Sexual Violence & the Role of the Advocate

Tierney Twing (she/her)
Dana Pellebon (she/her)

Content Warning

How do I know if I need a break?

- ❖ Fear/panic
- ❖ Sadness
- ❖ Increased heart rate
- ❖ Unable to focus
- ❖ Flashbacks
- ❖ Sweaty/clammy
- ❖ Stomach Discomfort



Objectives:

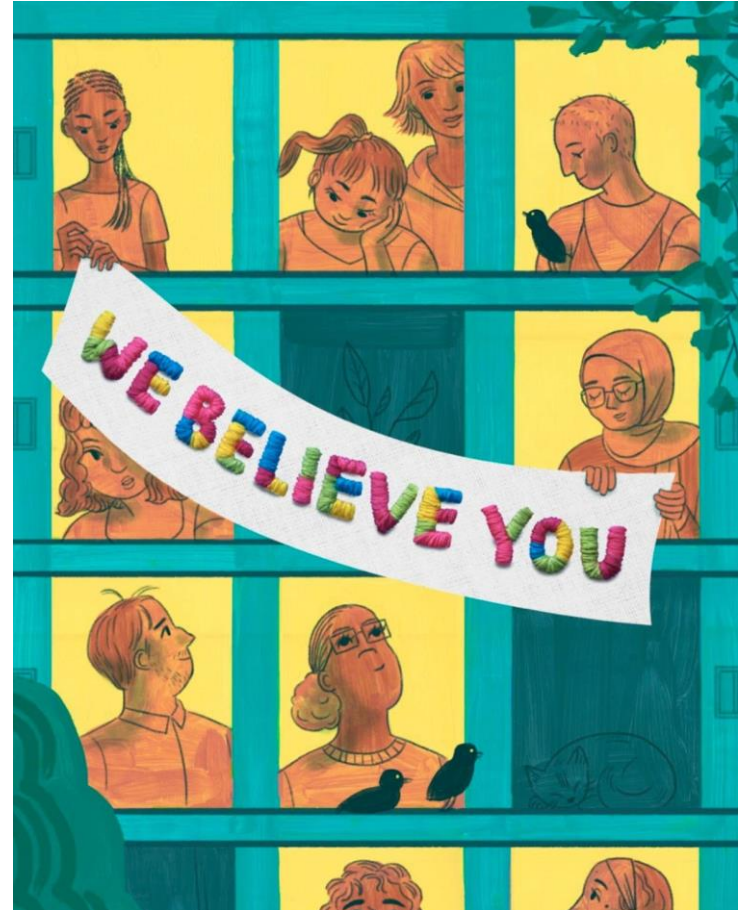
- ❖ Understand the prevalence of sexual violence
- ❖ Recognize the broad range of trauma responses
- ❖ Build skills in trauma-informed/ healing-centered interactions with survivors
- ❖ Bridge the gap between the survivor's and law enforcement's objectives
- ❖ Understand how intersections of oppression may impact a survivor's ability and willingness to interact with law enforcement



Before We Begin...

A Note on Language:

- ❖ Victim vs. Survivor
- ❖ Pronoun for the Victim & Perpetrator
- ❖ Take care of yourself; take care of others



Survivor Support & Advocacy

- ❖ 24-hour helpline
- ❖ 24 hour response to FNE's
- ❖ Advocacy before, during, and after the criminal process
 - ❖ Medical
 - ❖ Legal
 - ❖ Campus
- ❖ Emotional Support
- ❖ Individual & Youth Therapy
- ❖ Support Groups
- ❖ Comprehensive Community Service (CCS)

- ❖ English and Spanish available for Advocacy/Therapy

Education & Outreach

- ❖ Law Enforcement Academy
 - ❖ Training Future Doctors
 - ❖ School Education
 - ❖ GameChangers
 - ❖ Professional Development
 - ❖ Community Tabling
 - ❖ Chimera Self Defense
 - ❖ Safer Bar
-

In 2022:



3,478

HELPLINE CALLS



549

EMOTIONAL SUPPORT CLIENTS



305

CRIMINAL JUSTICE ACCOMPANIMENTS



322

HOSPITAL ACCOMPANIMENTS

What services are you missing?

- ❖ Hotel Stay for survivors and their immediate family
- ❖ 24 hour on scene advocate support
(Law Enforcement must be present)
- ❖ Assistance in getting out of a lease
- ❖ Funds for rent, groceries, gas, clothing, phone service, beds, etc.
- ❖ Support with pregnancy after an assault



Sexual Violence Is...

Any sexual behavior that happens without a person's consent



Sexual Assault is...

... Any unwanted and/or non-consensual sexual contact

What calls have you seen that could have used an advocate?



Why we do this work...

Nationally...

43% of women and 25% of men

Experience some form of sexual violence

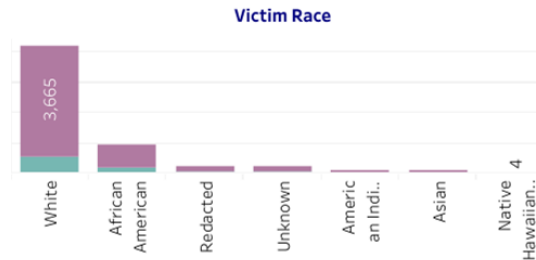
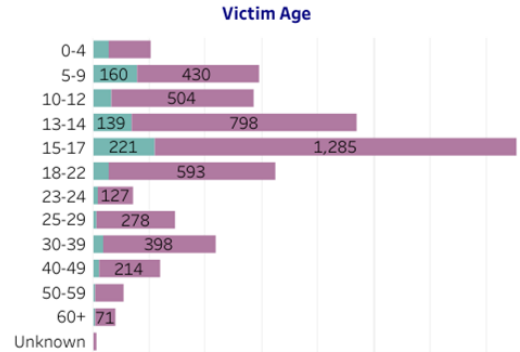
A look at sexual harassment

77% of women and 34% of men report **verbal sexual harassment**

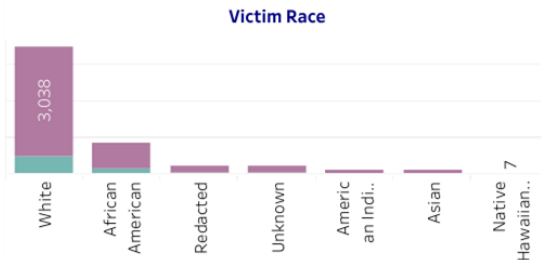
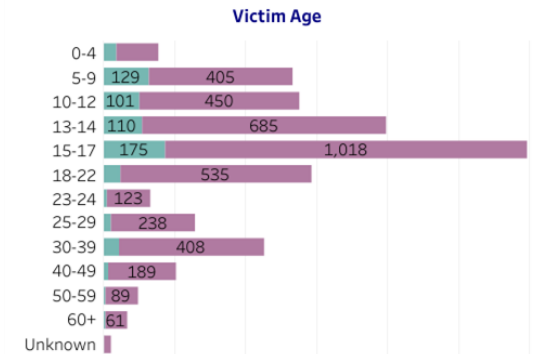
41% of women and 22% of men report **cyber sexual harassment**

Wisconsin Victim Demographics for All Sex Offenses 2021

Victim Sex	
Female	4,964
Male	821
Unknown	2
Grand Total	5,787



Victim Sex	
Female	4,333
Male	720
Unknown	3
Grand Total	5,056






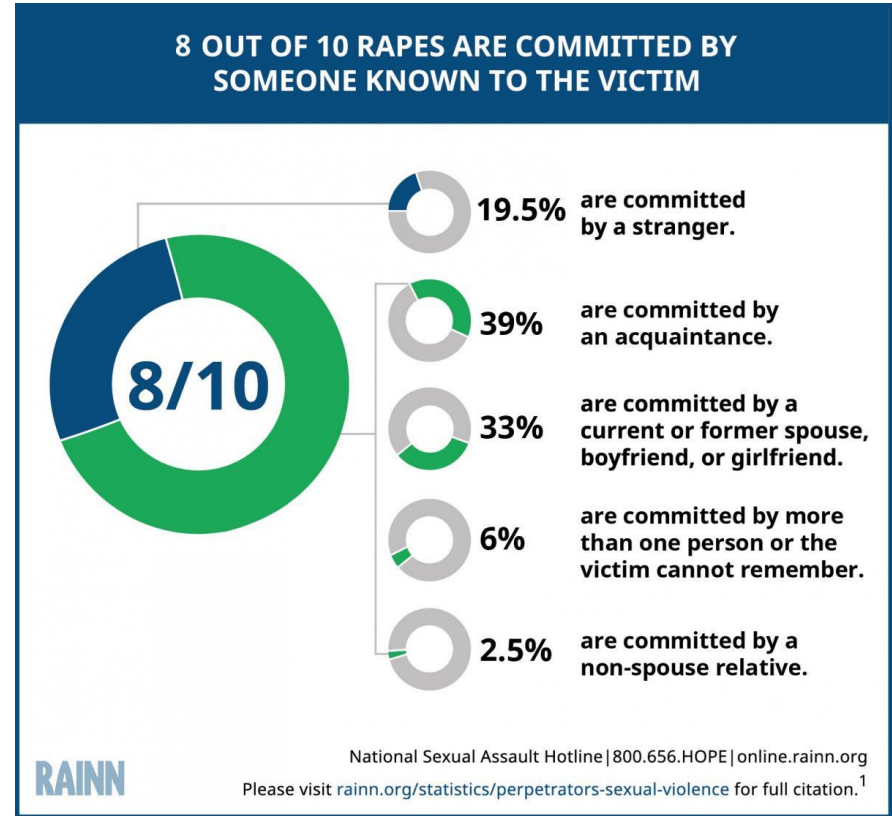
POP

QUIZ!

Question #1:

What percentage of reported sexual assaults are committed by someone known to the victim?

- A) 10-20 %
- B) 30-40%
- C) 50-60%
- D) 80-90% 



Question #2:

What percentage of sexual assaults are reported to the police?

A) 2%

B) 31%

C) 57%

D) 71%



Question #3:

What percentage of rape allegations turn out to be unfounded?

A) 2-8%



B) 17-21%

C) 40-45%

D) 61-68%



OUT OF EVERY 1,000 SEXUAL ASSAULTS, 975 PERPETRATORS WILL WALK FREE

310 are reported to policeⁱ



50 reports lead to arrestⁱⁱ



28 cases will lead to a felony convictionⁱⁱⁱ



25 perpetrators will be incarceratedⁱⁱⁱ



RAINN

National Sexual Assault Hotline | 800.656.HOPE | online.rainn.org

Please visit rainn.org/statistics/scope-problem for full citation.¹

Sources:

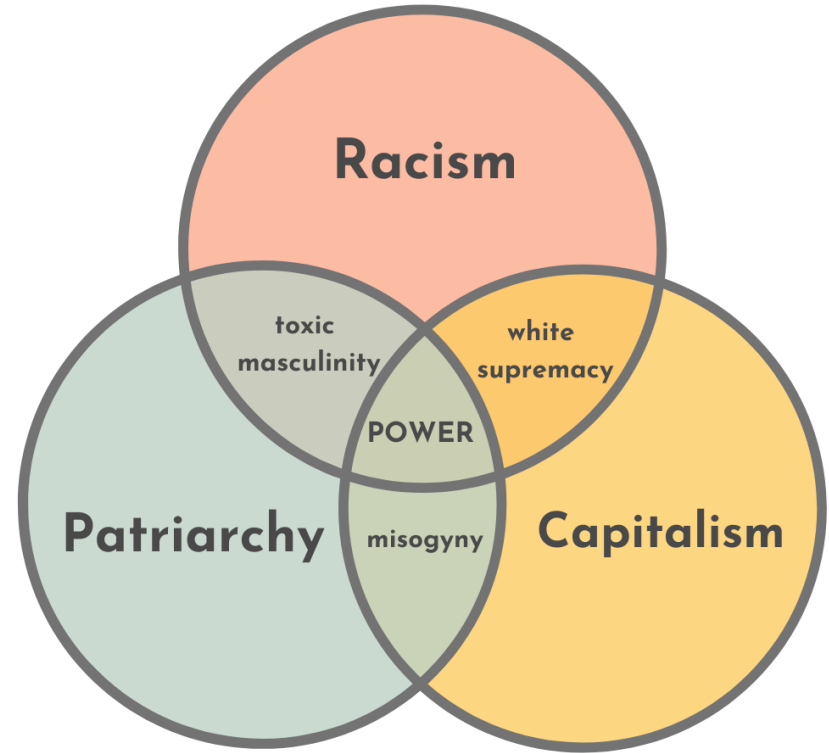
i. Department of Justice, Office of Justice Programs, Bureau of Justice Statistics, National Crime Victimization Survey, 2015-2019 (2020).

ii. Federal Bureau of Investigation, National Incident-Based Reporting System, 2012-2016 (2017);

iii. Federal Bureau of Investigation, National Incident-Based Reporting System, 2012-2016 (2017);

iv. Department of Justice, Office of Justice Programs, Bureau of Justice Statistics, Felony Defendants in Large Urban Counties, 2009 (2013).

Sexual violence is a tool of
POWER & CONTROL.



It's all connected.

All Oppression is Connected

Sexual violence is a tool of **POWER & CONTROL**.
Rates of sexual violence over the course of a lifetime
for just a FEW marginalized identities:



Black
women:
60%

Mixed Race
Men:
31.9%

Indigenous
Women
61%

Latina
Women:
>50%

People with
Developmental
Disabilities:
90%

Trans People:
47%

SEXUAL VIOLENCE & TRANSGENDER/ NON-BINARY COMMUNITIES



47%

Almost half of all transgender people have been sexually assaulted at some point in their lives, and these rates are even higher for trans people of color and those who have done sex work, been homeless, or have (or had) a disability.¹

Lifetime sexual victimization was much more prevalent among trans respondents who:¹

65%

Are American
Indian

59%

Are
Multiracial

58%

Are Middle
Eastern

53%

Are Black

72%

Had Done
Sex Work

65%

Had Been
Homeless

61%

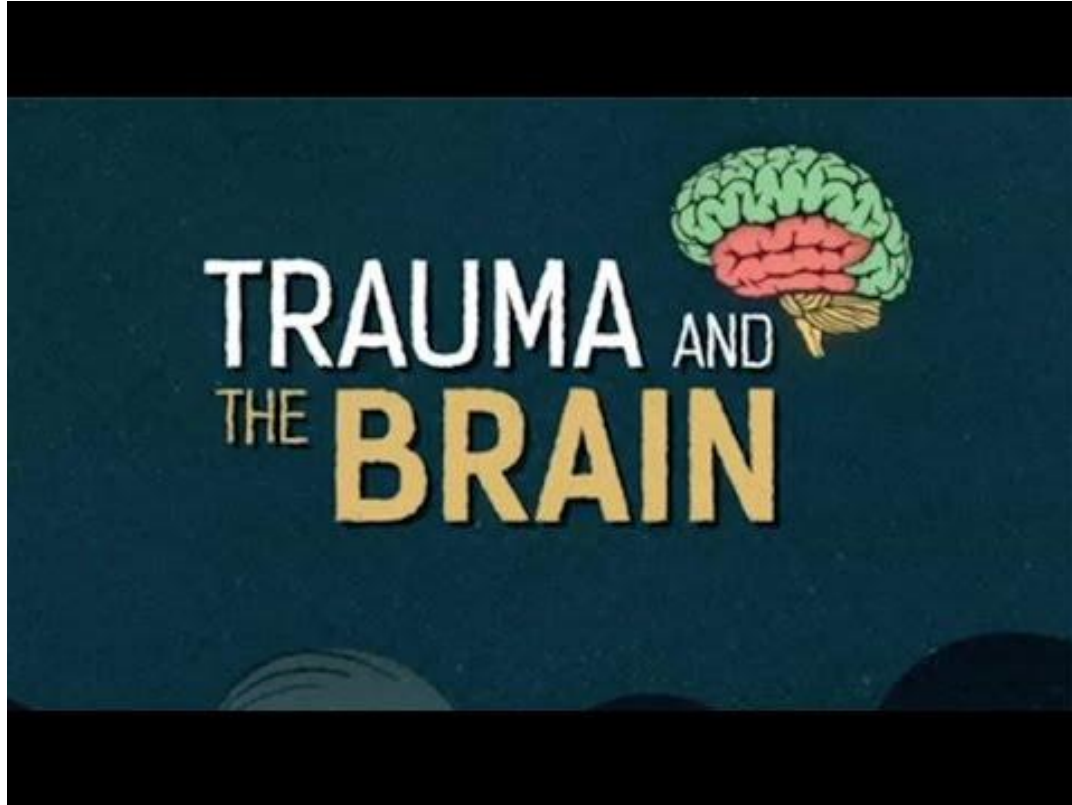
Had Lived with
Disabilities

A Look at the Numbers...

- ❖ Out of the **college-age women** whose experiences fit the **definition of rape**, only **12% identify** themselves as rape victims
- ❖ Out of the men whose actions fit the legal definition of rape, **84%** said what they did was definitely NOT rape



How does trauma affect the brain?



Based on the video, how do you think trauma might affect a survivor's ability to answer your questions?

Responses to Trauma

FIGH



FAWN



IGHT



The Effect of Trauma on the Brain

Keep in Mind:

- ❖ Appreciate the broad range of emotions and behavior
- ❖ Memory is fragmented, disjointed, recall is a process
- ❖ Decision-making ability is impaired by trauma



Memory Activity

Instructions (in pairs):

1. Read through the slips of paper, which represent a victim's statement about the experience.
2. Put the slips of paper in the order in which you think the events occurred.



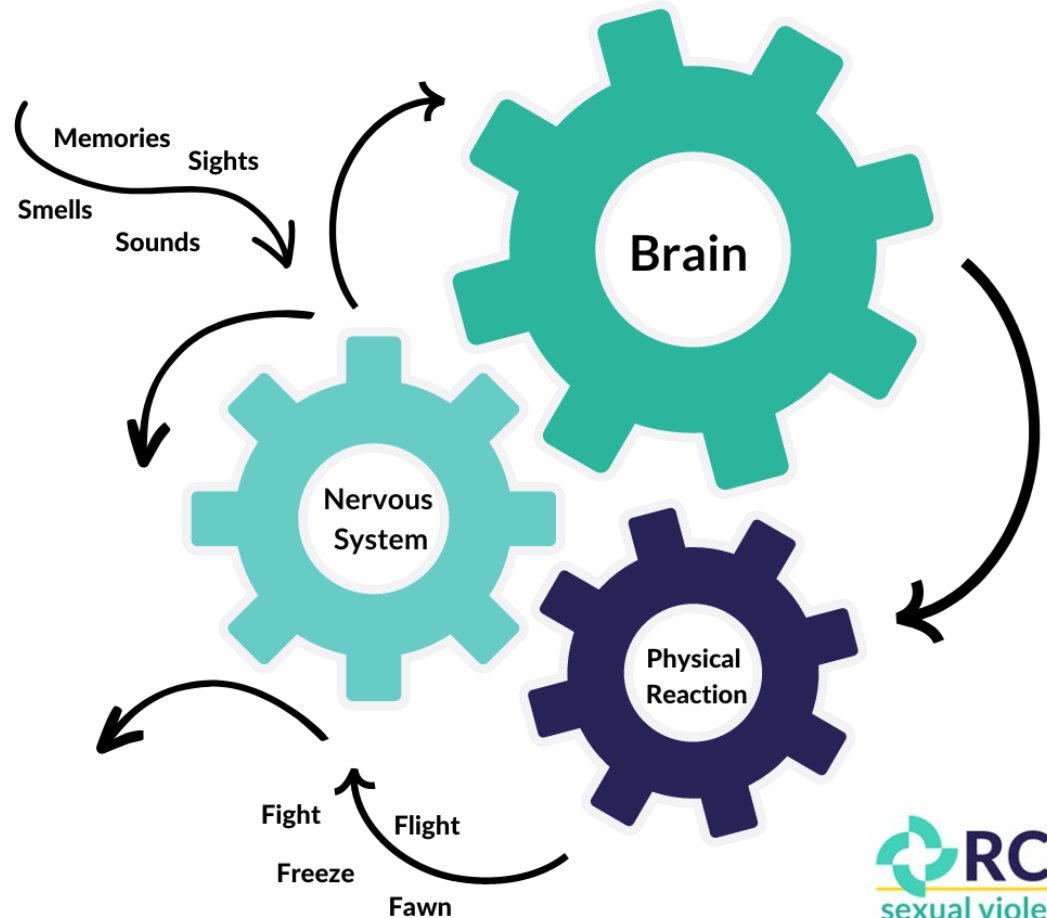
How Trauma Affect Survivors



Activation:

Activation Can Manifest As:

- ❖ Fear/panic
- ❖ Sadness
- ❖ Increased heart rate
- ❖ Unable to focus
- ❖ Flashbacks
- ❖ Sweaty/clammy
- ❖ Stomach Discomfort



Activation Points:



How can I support someone?



Questioning a Victim/ Survivor



Victim Interview Parody



Home Burglary Response Parody

Turn to the person next to you...

How might you change these questions?

- ❖ What were you wearing?
- ❖ Have you had sex with them before? (Or any question about sexual history)
- ❖ Were you drinking?
- ❖ Why did you go with them (the perpetrator)?



What is an advocates job during an interview?

- ❖ Prep survivor for interview
- ❖ Emotional support
- ❖ Be the voice for breaks
- ❖ Following up officer's questions with additional information (ex. Why is this being asked)
- ❖ Ensuring the survivor's rights are not being violated (ex. clothing for evidence)
- ❖ Ensuring the survivor feels and is heard



What is an advocates job after an interview?

- ❖ Follow up with the officer/detective
- ❖ Attend all hearings with/for the survivor
- ❖ Support life needs until and after the end of the criminal process

False Underlying Assumptions

- ❖ The victim could have done something to prevent the crime from occurring.
- ❖ Victims deserve to experience sexual violence because of their behaviors, actions, or decisions.

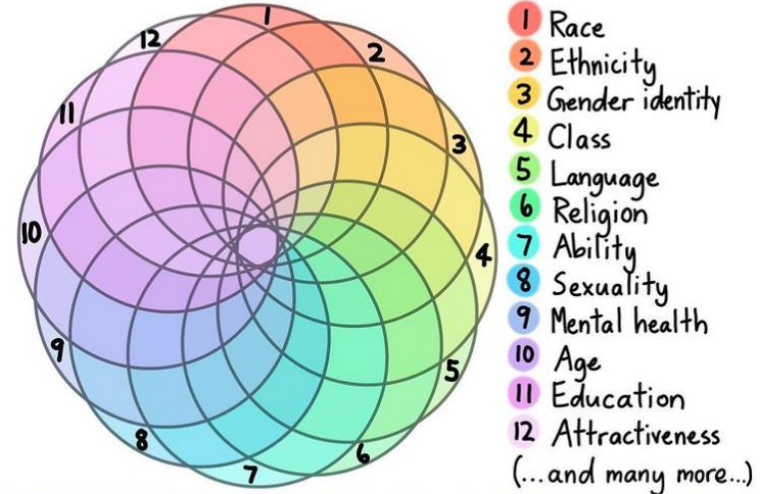


Intersections of Identity

Instructions(in pairs):

1. Consider some of the barriers and concerns victims/survivors might experience in interacting with you.
2. Share with the larger group.
3. Take an identity card from the deck, and discuss how that identity might impact your interactions.
4. Share with the larger group.

INTERSECTIONALITY



Intersectionality is a lens through which you can see where power comes and collides, where it locks and intersects. It is the acknowledgement that everyone has their own unique experiences of discrimination and privilege.

- Kimberlé Crenshaw -

Consider how you may show up for survivors you work with

- Which of your identities/ experience may impact how they receive you?
- Which of your identities/ experience impact how you approach them?
- What about the environment may impact these interactions?

